

# Unit 8 People and Events

## *Jingzhang Railway*

---

### Reading and Writing



# 百年景舟



## 壶艺泰斗---顾景舟

顾景舟从小聪明出众，18岁时，随祖母即氏学习制壶，凭借深厚的文学功底，出类拔萃，工艺精湛，一举成名，顾景舟见识了许多明清制壶大师的传世佳作，这对他日后紫砂壶造型的创新起到了不小的影响。

1954年，回到故乡的顾景舟积极参与溧阳陶业生产合作社紫砂生产工厂的组建筹划工作。

1975年，参与宜兴羊角山古窑址的发掘工作，对出土的文物进行了认真细致的研究。

1981年，专门建立“紫砂传艺班”，培养了许多人才。

1991年，出资成立“顾景舟教育奖励基金会”。

1996年，这期紫砂界的巨星陨落，令人嗟唏不已。

顾景舟，作为一名陶艺家，兢工严谨，不断进取，制出一把把工艺精湛、内涵丰富的紫砂壶。作为一名老师，他传道授业，悉心教导弟子，将所学倾囊相授，培养出一位位现今的国家级工艺美术大师。

## Project:

**1. Write an English introduction to Gu Jingzhou's residence and his life.**

**2. Design Gu Jingzhou's timeline of some important events.**

**Let's present!**



**Let's comment!**



**Let's learn!**



## Jingzhang Railway

The Jingzhang Railway **stretches** from Beijing to Zhangjiakou. It is well known in China because it was the first of its kind **designed** and built by Chinese people.

The **chief** engineer for this railway was Zhan Tianyou. Born in 1861 in Guangdong **Province**, he **showed an interest in** machines at an early age. At eleven, he went to study in the US. Upon his **graduation** from Yale University in 1881, Zhan **returned to** China and began his work on the Jingzhang Railway in 1905.

## Jingzhang Railway

The Jingzhang Railway must **go through** an area of hills and mountains. At that time, many people **believed** no one could ever build a railway there. However, Zhan Tianyou **overcame** all kinds of difficulties and **succeeded in** finishing the task. The 200-kilometer-long railway was **completed** in 1909, two years **ahead of schedule**. It is considered a **brilliant** piece of work in Chinese railway history.



# Skimming

What's the main idea of each paragraph?

**Jingzhang Railway**

The Jingzhang Railway stretches from Beijing to Zhangjiakou. It is well known in China because it was the first of its kind designed and built by Chinese people.

- more job opportunities
- better living conditions
- love for his country
- orders from his parents

The chief engineer for this railway was Zhan Tianyou. Born in 1861 in Guangdong Province, he showed an interest in machines at an early age. At eleven, he went to study in the US. Upon his graduation from Yale University in 1881, Zhan returned to China and began his work on the Jingzhang Railway in 1905.

The Jingzhang Railway must go through an area of hills and mountains. At that time, many people believed no one could ever build a railway there. However, Zhan Tianyou overcame all kinds of difficulties and succeeded in finishing the task. The 200-kilometer-long railway was completed in 1909, two years ahead of schedule. It is considered a brilliant piece of work in Chinese railway history.

Paragraph 1

A general introduction to the Jingzhang Railway.

Paragraph 2

The building of the Jingzhang Railway.

Paragraph 3

An introduction to the chief engineer of Jingzhang Railway.

# Skimming

What's the structure of each paragraph?

Paragraph 1: A general introduction to the Jingzhang Railway.



Paragraph 2: An introduction to the chief engineer of Jingzhang Railway.



Paragraph 3: The building of the Jingzhang Railway.

A. 分总



总分

C. 总分总

## Scanning

### 1. When was Zhan Tianyou born?

He was born in 1861.

P2L1: Born in 1861 in Guangdong Province, he showed an interest in machines at an early age.

### 2. When did Zhan Tianyou study in the USA?

In 1872.

P2L2: At eleven, he went to study in the US.

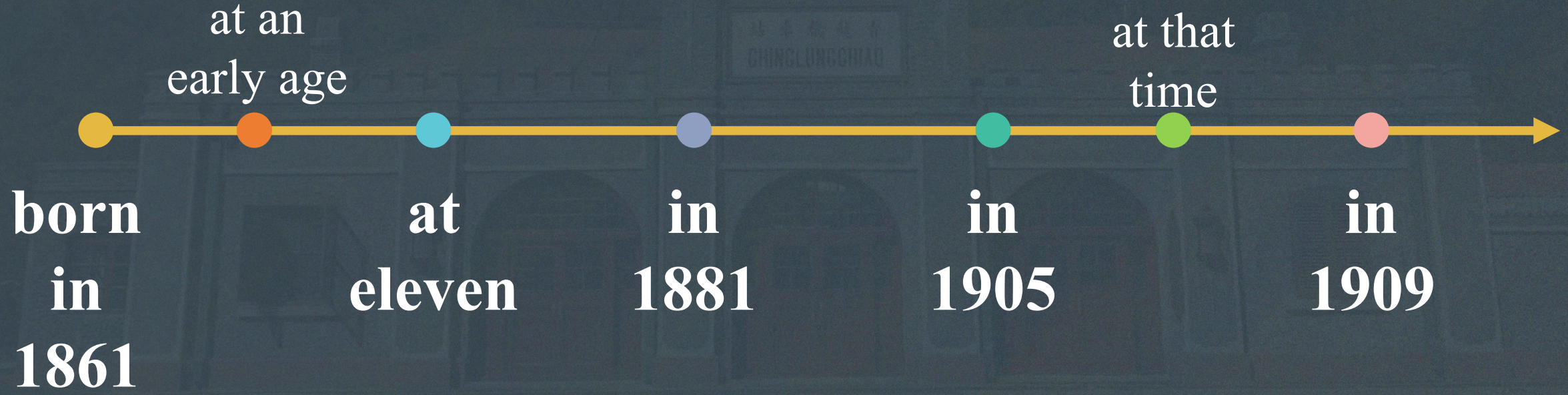
### 3. When would Zhan Tianyou complete Jingzhang Railway as planned?

In 1911.

P3L4: The 200-kilometer-long railway was completed in 1909, two years ahead of schedule.

Scanning

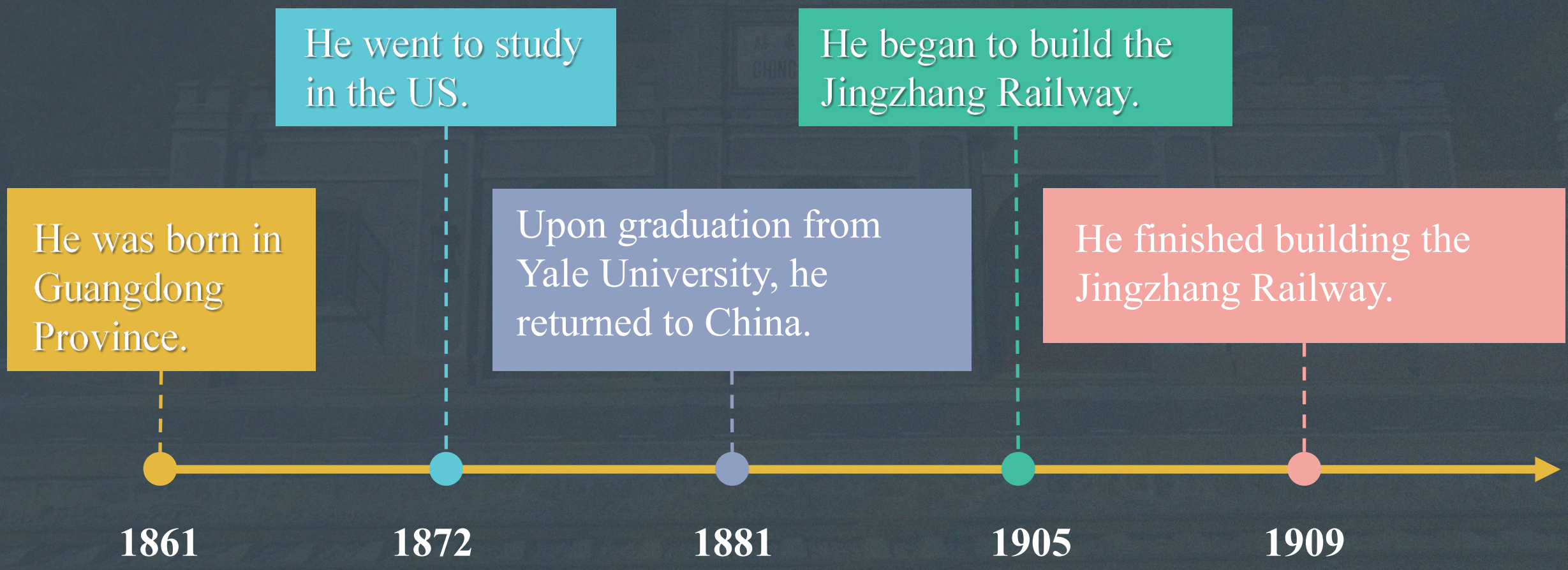
time markers



The passage is written in time order.

# Scanning

## Important Events in Zhan Tianyou's Life



## Detailed Reading

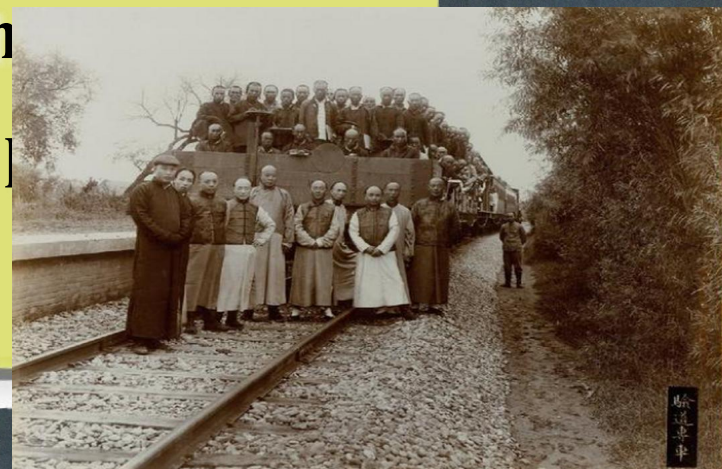
- F** 1) It was the first railway built in China.
- F** 2) The Jingzhang Railway was designed by Zhan Tianyou's Foreign friends.
- T** 3) There are many hills and mountains along the Jingzhang Railway.
- T** 4) The time plan for the Jingzhang Railway was 6 years.

## Key Facts About the Jingzhang Railway

Chief engineer	<u>Zhan Tianyou</u>
Length	<u>200 kilometers</u>
Time to build it	<u>4 years</u>
The main difficulty	The railway had to <u>go through</u> an area of <u>hills and mountains</u> .
Why people remember it	It was the first <u>railway designed and built</u> by Chinese engineers. They <u>overcame</u> all kinds of <u>difficulties</u> to build it.

# Deep Reading

## Why did Zhan Tianyou choose to return to China?



ob  
omf  
or h  
om l

## Discussing

Evaluate ZhanTianyou and the building of Jingzhang Railway.

ZhanTianyou is **brilliant/devoted/iconic/ not afraid of difficulties/hard-working/creative/brave...**

Building Jingzhang Railway is a great work based on the background of China **at that time**. It proves that Chinese people, who love the country, are able to **develop motherland and strengthen the nation**.

## Summarizing

1. What are the features of narration on people and events in history?

**Using time markers to make the text organized. Choose typical events.**

2. What are the factors when we make a timeline of people?

**Time, people, events and meanings.**

**(pictures, explanations, contrast)**



1989年

晋升为高级工艺美术师。

1991年

顾景舟在宜兴丁蜀镇成立“顾景舟教育奖励基金会”。亲自编撰巨著《宜兴紫砂珍赏》。

1992年

顾景舟参加紫砂陶文化国际研讨会，发表《紫砂陶史概论》。

1993年

年近80高龄的顾景舟为弘扬紫砂陶艺文化，应邀赴台湾举办“宜兴紫砂陶精品展”。

1994年

国家邮电部发行《紫砂陶》特种纪念邮票。作品《提壁茶具》入选《中国现代陶瓷艺术》一书，由清华大学美术学院共同出版。

1996年6月

病逝于宜兴人民

1981年

在顾景舟的支持及参与下，建立“紫砂特艺班”。同年顾景舟三次参加全国工艺美术家代表大会，受到国家领导人的接见。

1982年

经国家评定为工艺美术师。

1983年

作品《供春壶》、《牛盖》、《鹤鸣提梁》等作品

经国家审定委员会金质奖。

1984年

任宜兴紫砂研究所技

术人员

1959年

顾景舟被任命为宜兴紫砂厂技术研究室副主任和技术股副股长，并参与北京人民大会堂江苏厅的布置设计工作，设计了一批大型的茶具及高档花盆。

1964年

时年五十岁的顾景舟与徐文宝女士结婚。

1972年

创作了《提壁茶具》、《雪华壶》、《上新桥壶》、《咏梅茶具》等名作。

1974年

顾景舟作品《僧帽壶》、《井栏壶》获得国家轻委质量银质奖。

1975年起

多次参加宜兴地区古窑址的考古调查与研究，并对鼋鼋羊角山紫砂古窑遗址进行了认真细致的考证，先后发表数十万字的学术论文。

1954年10月

顾景舟响应政府号召，积极参与汤渡陶业生产合作社紫砂生产工场(宜兴蜀山陶业合作社前身)的组建工作。因工作需要搬家至蜀山南街居住，之后居所数易其地。

1955年1月

蜀山紫砂工厂独立成立《蜀山紫砂工艺社》，顾景舟任生产理事委员兼技术辅导员，着手负责“紫砂工艺班”的招生和育才重任。李昌鸿、沈遽华、高海庚等入师从顾景舟学艺。顾景舟与朱可心、任淦庭、裴石民、吴云根、王寅春、蒋蓉并称“紫砂七老”，同期与朱可心合力创作《松鼠葡萄咖啡茶具》。

1956年

蜀山陶业生产合作社改名为宜兴紫砂工艺厂，顾景舟被江苏省人民政府任命为技术辅导，并被国家授予工艺美术行业“工艺师”的最高荣誉。顾景舟与中央工艺美术学院高庄教授合力创作《提壁壶》。



Please polish the timeline of Gu Jingzhou and his important events.



**Revise your drafts  
about Gu Jingzhou and  
his life.**



# Present & Evaluate

## 顾景舟人物生平简介英语文案 小组展示评价表

评价对象：\_\_\_\_\_小组 评价主体：\_\_\_\_\_小组

评价维度	评分标准	分值	得分
一、 时间标志词使用 (25分)	优秀(20-25分)：准确使用 at the age of, in 19XX, during, since, later 等 3 种及以上时间标志词，且与生平时间线匹配，无语法错误	25	
	良好(14-19分)：准确使用 2 种时间标志词，与时间线基本匹配，偶有轻微语法错误但不影响理解		
	合格(8-13分)：使用 1 种时间标志词，存在 2-3 处语法错误，部分与时间线衔接不自然		
	待改进(0-7分)：未使用时间标志词或使用错误较多，严重影响时间线呈现		
二、 重大历史人物事件表达(30分)	优秀(24-30分)：完整涵盖顾景舟拜师学艺、技艺成熟、成名关键事件、行业贡献等 3 件及以上核心事件，英语表达准确，事件逻辑清晰	30	
	良好(18-23分)：涵盖 2 件核心事件，英语表达基本准确，存在个别词汇或句式不当，事件逻辑较清晰		
	合格(12-17分)：涵盖 1 件核心事件，英语表达存在多处词汇错误，事件描述不够完整，逻辑较模糊		
	待改进(0-11分)：未涵盖核心事件或事件描述错误，英语表达混乱无法		

三、 英语文案语言质量(25分)	理解	25	
	优秀(20-25分)：语法正确，词汇搭配恰当，句式多样(简单句+复合句)，语句流畅，无拼写错误		
	良好(14-19分)：语法基本正确，词汇搭配较恰当，以简单句为主，偶有拼写错误(≤2处)，不影响理解		
	合格(8-13分)：存在 3-5 处语法错误，词汇搭配有不当之处，拼写错误较多(3-5处)，部分影响理解		
四、 小组展示表现(20分)	待改进(0-7分)：语法错误密集，词汇搭配混乱，拼写错误≥6处，严重影响理解	20	
	优秀(16-20分)：分工明确，成员配合默契，展示声音洪亮、语速适中，脱稿展示，时间控制合理(3-5分钟)		
	良好(12-15分)：分工较明确，成员配合较默契，展示声音清晰、语速较适中，半脱稿展示，时间基本合理(2-6分钟)		
	合格(8-11分)：有分工但配合不流畅，展示声音较小或语速不当，照稿宣读，时间偏短(<2分钟)或偏长(>6分钟)		
待改进(0-7分)：无明确分工，成员配合混乱，展示声音模糊无法听清，时间严重不符或未展示			
总分：			

## *Summary*



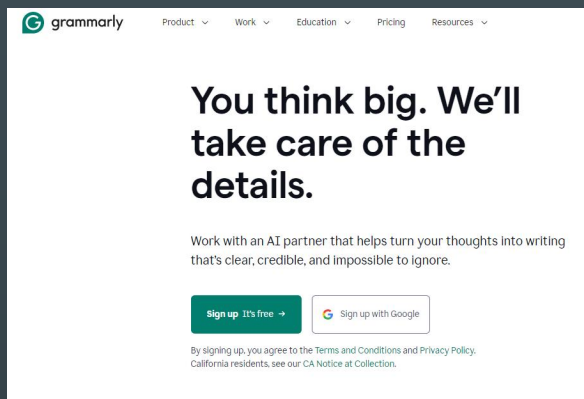
**Father of China's Railway**



**Civil Master of Purple Clay  
(布衣壶宗)**

# Homework

Revise your work according to the evaluation standards.



Polish your timeline.



Excellent works will be displayed in Gu Jingzhou's residence.





*Your are the best!*

Unit 8 People and Events